

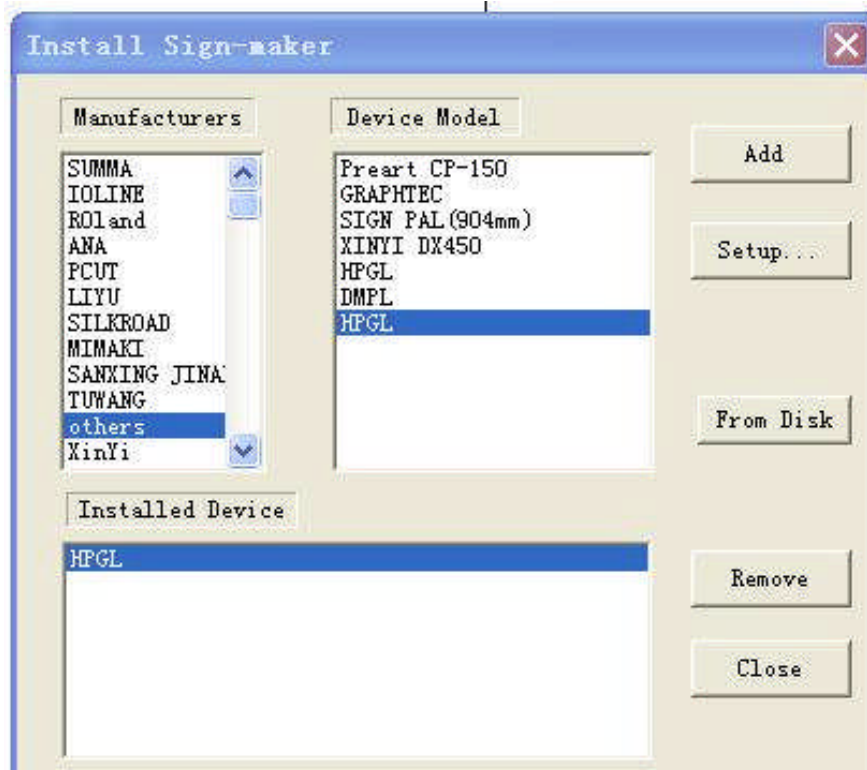
AIP Product User Guide

Vinyl Cutter / Cutting Plotter - Device Setup Models: AIP-0720, AIP-0800, AIP-1120, AIP-1360

This guide is about how to Set up Artcut device so the software Artcut can communicate with the cutter correctly.

1. Install Device driver for AIP vinyl cutter / cutting plotting

From the **File** menu, select **Cut/Plot...** the first time, the Install Sign-Maker dialog (see below) is displayed.



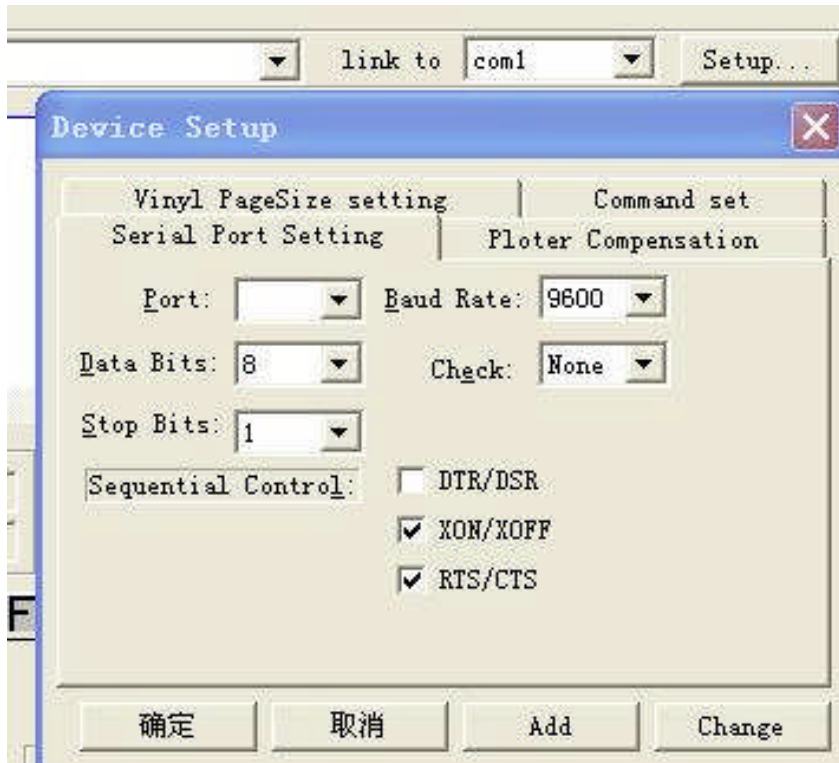
Select **Others** under Manufacturers and select the last **HPGL** as shown in the above screen shot. If it does not work, try DMPL or the first HPGL.

2. Device Setup for AIP-0720/0800/1120/1360 Cutter

From the **File** menu, select **Cut/Plot...** and the Set Engraver/Router's Output dialog box is

displayed. Click the Setup... button, the Device Setup dialog box is displayed (see below).

Make sure you have the proper settings for your cutter. Here is a brief description about settings on each category (tab page).



Serial Port Setting

- **Port** to COM1, sometimes COM2.
- **Baud Rate**: match the setting with your plotter; by default 9600.
- **Sequential Control**: Under Windows XP, by default XON/XOFF and RST/CTS are checked. Some systems may require to set DTR/DSR and RTS/CTS, or XON/XOFF alone, or DTR/DSR and XON/XOFF. If your default setting does not work, try these other combinations.

Set Plotter compensation:

- check **Close** and set Close to 0.30
- check **Sharp angle** and set its value to 0.41
- check **Plotting accuracy** to “High”

You may need to fine-tune the above settings to get the best result for plotting round shape and sharp angles.

Set Vinyl Page Size:

- Res of Horz.: 1000dpi
- Res of Vert.: 1000 dpi

You may need to fine-tune the above dpi settings in order to get precise x and y direction plotting accuracy.

For further information or technical support, please contact us by phone or email. For product warranty, please visit our website for details.

All Image Printing Division**Aprimo Group Inc.**

3510 Pharmacy Avenue, Unit 6

Toronto, Ontario M1W 2T7

Canada

Tel: 416-670-8998

Fax: 416-499-9926

Email: aip@allimageprinting.com

Web: <http://www.allimageprinting.com>