

AIP Product User Guide

Vinyl Cutter - Device Setup for Artcut 2009 Models: AIP-0720, AIP-0800, AIP-1120, AIP-1360

This guide is about how to set up Artcut device so the software Artcut can communicate with the cutter correctly.

1. Install device driver for AIP vinyl cutter

From the **File** menu, select **Cut/Plot...** the first time, the Install Sign-Maker dialog (see below) is displayed.



Fig. 1 Install device Dialog

Select **Others** under Manufacturers and select the last **HPGL** as shown in the above screen shot. If it does not work, try DMPL or the first HPGL.

2. Set up the installed device

From the **File** menu, select **Cut/Plot...** and the Cut/Plot dialog box is displayed (Fig 2). Click the **Setup...** button, the Port setting dialog box is displayed (Fig 3).

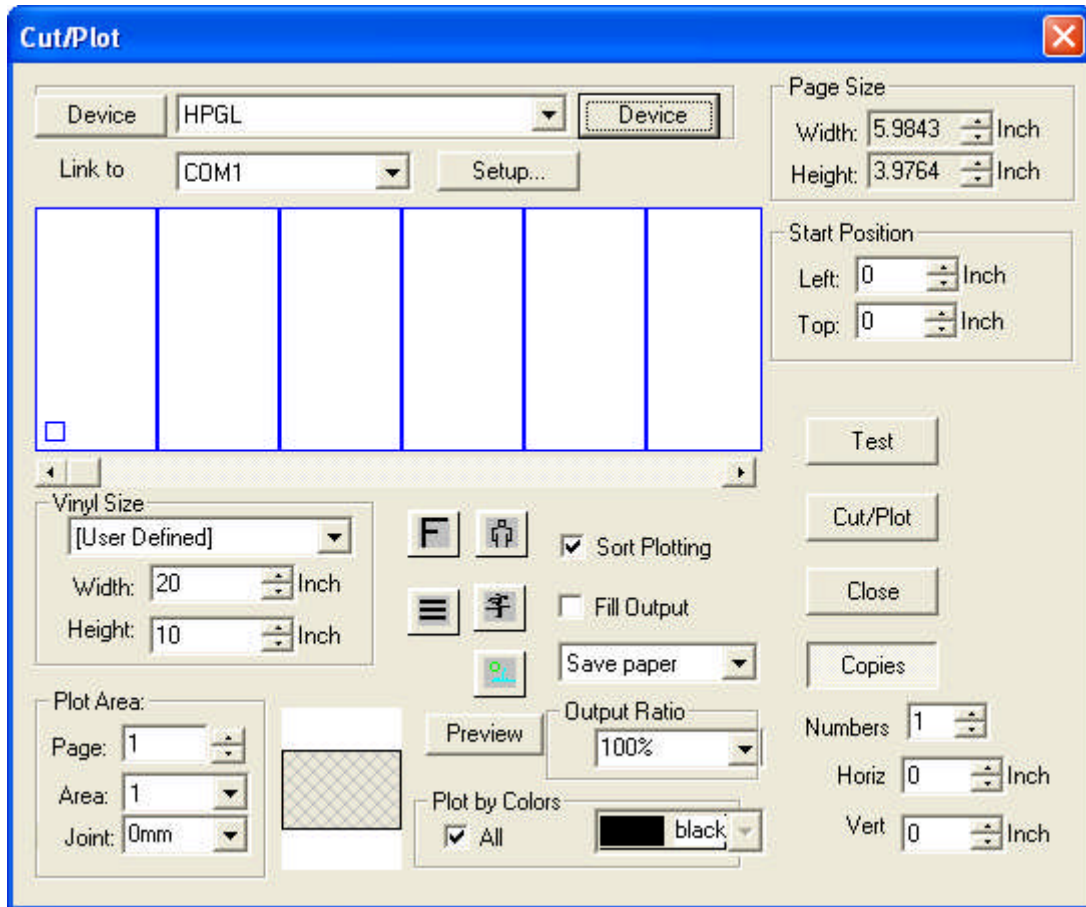


Fig 2. Cut/Plot Dialog Box

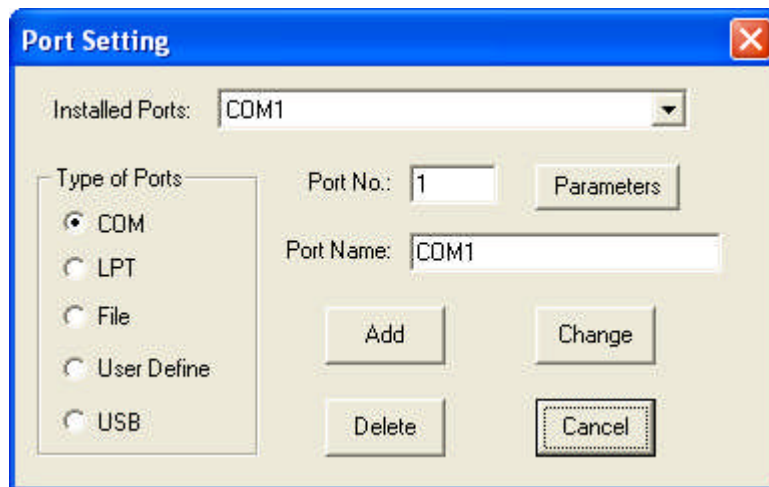


Fig 3. Port Setting Dialog Box

Select the port on your computer to which your cutter is connected, by default COM1. If you use a USB-serial adapter cable, you need to find out the COM port number it has been assigned when you install the driver for the adapter cable. Make sure you use the serial cable to connect the machine and the adapter cable.

Then click the **Parameters** button, and the detailed port settings dialog is displayed (Fig. 4).

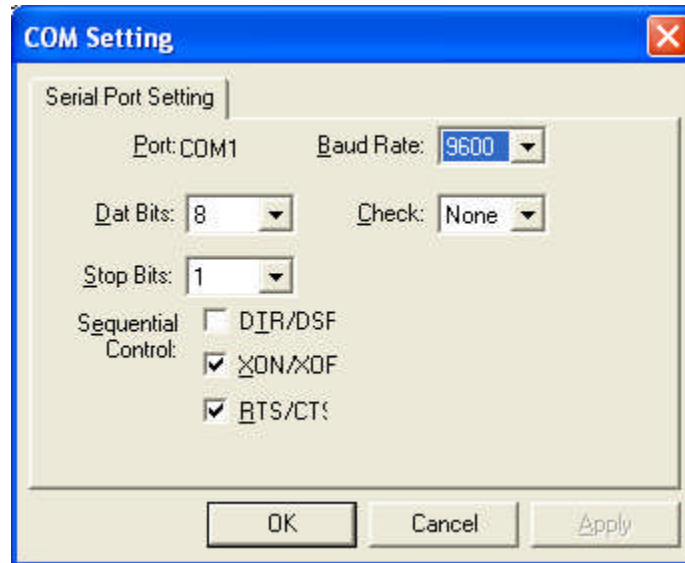


Fig. 4. COM port parameters

Select the settings like those in Fig 4. Click OK to save the settings and close the dialog box. Then click the **Change** button (Fig 3) to commit the settings to the port.

Sequential Control settings:

- Under Windows XP, by default XON/XOFF and RTS/CTS are checked. Some systems may require to set DTR/DSR and RTS/CTS, or XON/XOFF alone, or DTR/DSR and XON/XOFF. If your default setting does not work, try these other combinations.
- To test port without switching on cutter, uncheck RTS/CTS option. This will allow your test cutting proceed without actually cutting it. This helps troubleshooting when Artcut cannot communicate with cutter.

Other settings

Click the **Device** button on Cut/Plot dialog box (Fig 1), the Device Set up dialog box is displayed (Fig. 4). You can set other options there. Here is a brief description about settings on each category (tab page).

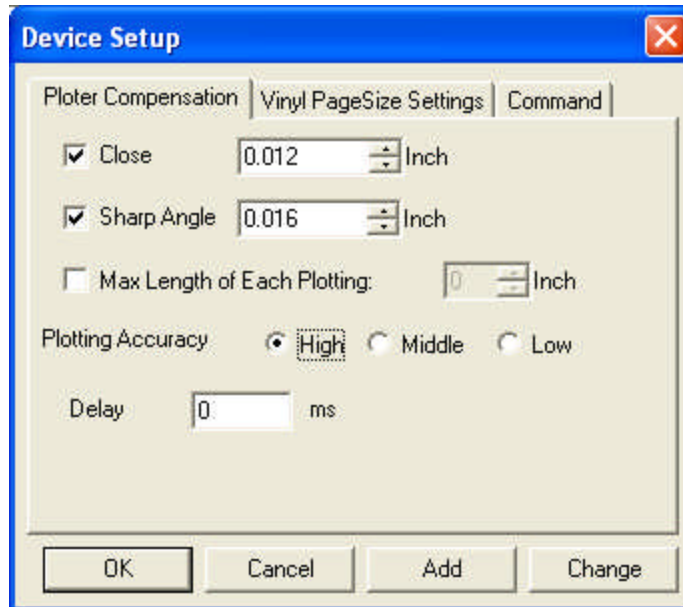


Fig 5. Device setup dialog box

Set Plotter compensation:

- check **Close** and set Close to 0.012” (12 mil, or 0.30 mm)
- check **Sharp angle** and set its value to 0.016” (16 mil or 0.41 mm)
- check **Plotting accuracy** to “High”

You may need to fine-tune the above settings to get the best result for plotting round shape and sharp angles.

Set Vinyl Page Size:

- Res of Horz.: 1000dpi
- Res of Vert.: 1000 dpi

You may need to fine-tune the above dpi settings in order to get precise x and y direction plotting accuracy.

For further information or technical support, please contact us by phone or email. For product warranty, please visit our website for details.

All Image Printing Division

Aprimo Group Inc.

3510 Pharmacy Avenue, Unit 6

Toronto, Ontario M1W 2T7, Canada

Tel: 416-670-8998

Email: aip@allimageprinting.com

Web: <http://www.allimageprinting.com>